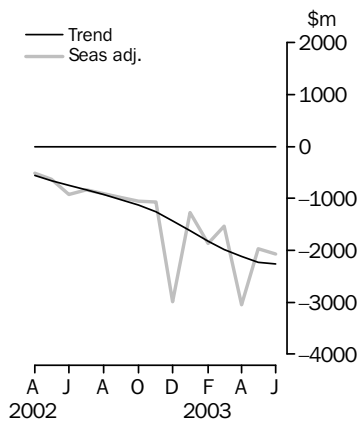


INTERNATIONAL TRADE IN GOODS AND SERVICES

AUSTRALIA

EMBARGO: 11.30AM (CANBERRA TIME) TUES 29 JUL 2003

Balance on goods and services



KEY FIGURES

	Apr 2003	May 2003	Jun 2003	May 03 to Jun 03 %
	\$m	\$m	\$m	change
TREND				
Balance on goods & services	-2 123	-2 225	-2 264	-2
Credits (exports of goods & services)	11 751	11 476	11 249	-2
Debits (imports of goods & services)	13 874	13 701	13 513	-1
SEASONALLY ADJUSTED				
Balance on goods & services	-3 048	-1 969	-2 067	-5
Credits (exports of goods & services)	11 192	11 422	11 374	—
Debits (imports of goods & services)	14 240	13 391	13 441	—

— nil or rounded to zero (including null cells)

KEY POINTS

TREND ESTIMATES

- The provisional trend estimate of the balance on goods and services was a deficit of \$2,264m in June, an increase of \$39m on the deficit in May.
- Goods and services credits fell \$227m to \$11,249m. Goods and services debits fell \$188m to \$13,513m.

SEASONALLY ADJUSTED ESTIMATES

- In seasonally adjusted terms, the balance on goods and services was a deficit of \$2,067m in June, an increase of \$98m (5%) on the deficit in May.
- Goods and services credits fell \$48m to \$11,374m. Non-rural and other goods fell \$89m (1%) and rural goods fell \$2m. Services credits rose \$43m (2%).
- Goods and services debits rose \$50m to \$13,441m, with goods debits up \$81m (1%) and services debits down \$31m (1%). Capital goods rose \$303m (13%) while intermediate and other goods fell \$145m (3%) and consumption goods fell \$77m (2%).

ORIGINAL ESTIMATES

- In original terms, the June balance on goods and services was a deficit of \$2,243m, an increase of \$422m (23%) on the deficit in May. The increased deficit was the result of a \$138m decrease in exports and a \$284m increase in imports of goods and services.

2002-03 SITUATION

- For 2002-03, the balance on goods and services (in original terms) was a deficit of \$19.7b. This is an increase of \$18.1b on the 2001-02 deficit and was driven by a \$13.1b (8.5%) increase in imports and a \$5.0b (3.3%) decrease in exports of goods and services.

INQUIRIES

- For further information about these and related statistics, contact the National Information and Referral Service on 1300 135 070 or Cesar Gonzales on Canberra (02) 6252 7590.

NOTES

FORTHCOMING ISSUES

<i>ISSUE</i>	<i>RELEASE DATE</i>
July 2003	29 August 2003
August 2003	29 September 2003
September 2003	30 October 2003
October 2003	4 December 2003
November 2003	9 January 2004
December 2003	2 February 2004



CHANGES IN THIS ISSUE

In original terms, revisions since the previous issue have decreased the deficit on goods and services for the 11 months to May 2003 by \$27m.

The revisions are the result of incorporating the latest available data relating to merchandise trade and the quarterly Survey of International Trade in Services.

CAUTIONARY NOTE

The tables in this publication are presented on two bases. Tables 1-6 contain estimates of Australia's international trade in goods and services which have been adjusted for coverage, valuation and timing to a balance of payments basis. Tables 7-10 contain estimates of merchandise exports and imports based on Australian Customs Service records. Paragraph 5 of the Explanatory Notes provides an explanation of the difference between these bases.

TABLES AVAILABLE ON AUSSTATS

Tables in this publication are available with longer time series on AusStats. Merchandise exports and imports are available at the more detailed SITC 3 digit level and for all countries and country groups. Additional tables providing data by Broad Economic Category and industry are now also available. Alternative breakdowns of merchandise trade data are available under table numbers 5432.0.65.001 (Exports) and 5439.0 (Imports).



ABBREVIATIONS

ABS	Australian Bureau of Statistics
ACS	Australian Customs Service
APEC	Asia Pacific Economic Co-operation
ASEAN	Association of South-East Asian Nations
n.e.s.	not elsewhere specified
n.i.e.	not included elsewhere
OECD	Organisation for Economic Co-operation and Development
SAR	Special Administrative Region
SITC	Standard International Trade Classification

Dennis Trewin
Australian Statistician

CONTENTS

page

Additional tables on AusStats 4

ANALYSIS

Analysis and comment 5

TABLES

INTERNATIONAL TRADE IN GOODS AND SERVICES - BALANCE OF PAYMENTS BASIS

1 Goods and services, summary, seasonally adjusted and trend 9
2 Goods and services, summary, original 10
3 Goods credits, original 11
4 Goods debits, original 12
5 Services, summary, original 13
6 Services, original, quarterly 14

INTERNATIONAL MERCHANDISE TRADE - RECORDED TRADE BASIS

7 International merchandise exports, by commodity 15
8 International merchandise imports, by commodity 18
9 International merchandise trade, by country and country groups 21
10 International merchandise trade, by state 22

OTHER TABLES

11 Period average exchange rates per Australian Dollar 23

OTHER INFORMATION

Explanatory notes 24
Appendix – Related articles 26

ADDITIONAL TABLES ON AUSSTATS

LIST OF TABLES AVAILABLE FROM AUSSTATS

The tables below are available from the AusStats service on <www.abs.gov.au> by selecting AusStats; Publication & Data; Time Series Spreadsheets.

- 12 Merchandise exports by Broad Economic Category (BEC)
- 13 Merchandise exports by industry (ANZSIC)
- 14 Merchandise imports by Broad Economic Category (BEC)
- 15 Merchandise imports by Balance of Payments Broad Economic Category (BoPBEC)
- 16 Merchandise imports by industry (ANZSIC)

ANALYSIS AND COMMENTS

BALANCE ON GOODS AND SERVICES

The trend estimate of the balance on goods and services in June 2003 was a deficit of \$2,264m, an increase of \$39m on the deficit in May.

In seasonally adjusted terms, the balance on goods and services in June was a deficit of \$2,067m, an increase of \$98m on the deficit in May.

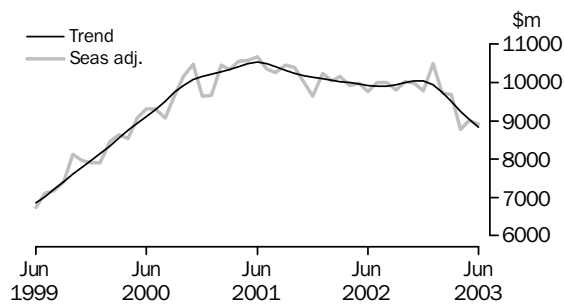
The sum of the seasonally adjusted balances for the three months to June 2003 was a deficit of \$7,084m, an increase of \$2,412m on the deficit of \$4,672m for the three months to March 2003. However, if the more detailed seasonal factors used in compiling the quarterly Balance of Payments are applied, the June quarter 2003 deficit was \$6,873m, an increase of \$2,099m on the revised March quarter 2003 deficit of \$4,774m.

EXPORTS OF GOODS AND SERVICES

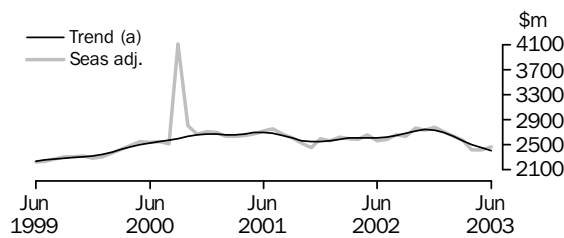
The trend estimate of goods and services credits fell \$227m in June to \$11,249m.

In seasonally adjusted terms, goods and services credits fell \$48m in June to \$11,374m. Rural goods fell \$2m, and non-rural and other goods fell \$89m (1%). Services credits rose \$43m (2%), driven by a rise in travel services from recent low levels.

GOODS CREDITS



SERVICES CREDITS



(a) Trend estimates exclude the impact of the Olympics in September and October 2000

Rural goods

The trend estimate of rural goods fell \$37m (2%) to \$1,789m.

In seasonally adjusted terms, rural goods decreased \$2m to \$1,776m.

Rural goods, in original terms, fell \$174m (9%) to \$1,666m. Rural goods in 2002-03 were down \$4.6b on 2001-02.

While the movement in the seasonally adjusted exports of rural goods was small, the levels of rural goods exports remained markedly lower than in the previous year. For 2002-03:

- Cereal grains and cereal preparations were down \$2,024m (33%) on 2001-02, largely due to reduced volumes of wheat exports;

ANALYSIS AND COMMENTS *continued*

Rural goods continued

- Other rural were down \$1,886m (14%) on 2001-02, largely due to reduced exports of dairy produce and birds eggs, down \$785m, and vegetables and fruits, down \$431m;
- Meat and meat preparations were down \$591m (9%) on 2001-02; and
- Wool and sheepskins were down \$139m (4%) on 2001-02.

Non-rural and other goods

The trend estimate of non-rural and other goods exports fell \$149m (2%) to \$7,050m.

Seasonally adjusted, non-rural goods decreased \$89m (1%) to \$7,135m.

In original terms, non-rural goods fell \$161m (2%) to \$6,431m. Non-rural goods exports in 2002-03 were down \$1.6b on 2001-02.

Contributing to the decrease in the seasonally adjusted series were:

- Transport equipment, down \$118m (21%), compared to an average May to June fall over the previous three years of 1%. Other transport equipment decreased \$92m (25%), while road vehicles decreased \$34m (10%).
- Other mineral fuels, down \$72m (9%), in contrast the an average May to June rise over the previous three years of 2%. Exports of petroleum and petroleum products decreased \$88m (16%), as a result of the decrease in exports of automotive gasoline, down \$31m (63%), and oil preparations, down \$20m (47%). Partly offsetting these decreases were increases in exports of gas, up \$16m (6%).
- Other non-rural goods, down \$7m (1%), in contrast to an average May to June rise over the previous three years of 10%.
- Machinery, down \$31m (5%), in contrast to an average May to June rise over the previous three years of 5%.

Partly offsetting these effects were:

- Other goods rose \$75m (11%) to \$734m, in contrast to an average May to June fall over the previous three years of 11%. The major contributor to this increase was gold, up \$198m (48%), partly offset by decreased exports of goods for processing, down \$120m (65%).
- Metals (excluding gold), up \$33m (5%), in contrast to an average May to June fall over the previous three years of 1%. Exports of non-ferrous metals increased \$21m (4%), while exports of iron and steel also recorded an increase, up \$7m (9%).

Non-rural goods exports fell by \$1.6b in 2002-03 compared to 2001-02. Exports of coal, coke and briquettes fell by \$1.4b. Exports of other goods rose by \$1.1b in 2002-03.

IMPORTS OF GOODS AND SERVICES

The trend estimate of goods and services debits fell \$188m in June to \$13,513m.

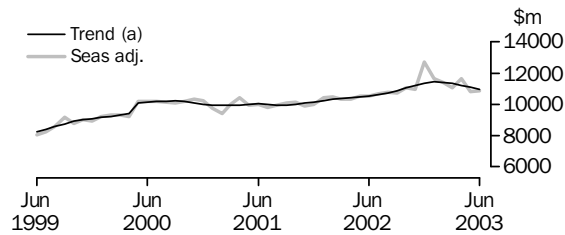
In seasonally adjusted terms, goods and services debits rose \$50m to \$13,441m. Goods debits rose \$81m (1%) and services debits fell \$31m (1%).

Preliminary analysis shows that goods imports volumes, in seasonally adjusted terms, increased about 3.3% during the June quarter 2003. The Chain Laspeyres price index fell about 5.1% and the implicit price deflator fell about 5.7%. The final volume and price outcomes will be published in the June quarter 2003 issue of *Balance of Payments and International Investment Position, Australia* (5302.0).

ANALYSIS AND COMMENTS *continued*

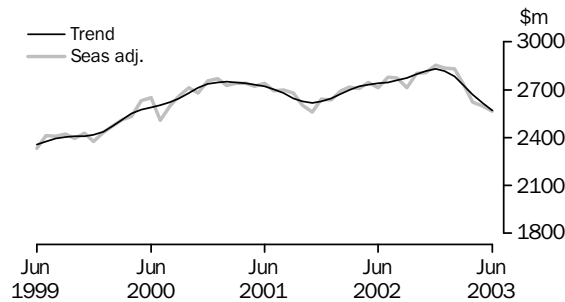
IMPORTS OF GOODS AND SERVICES *continued*

GOODS DEBITS



(a) A trend break of \$500m has been applied to May 2000. Trend estimates exclude abnormal imports of aircraft in December 2002.

SERVICES DEBITS



Consumption goods

The trend estimate of imports of consumption goods rose \$8m to \$3,473m.

In seasonally adjusted terms, imports of consumption goods fell \$77m (2%) to \$3,439m.

Consumption goods, in original terms, rose \$2m to \$3,190m, with small rises in most commodities.

Consumption goods imports in 2002-03 were \$3.8b higher than in 2001-02, with the biggest increase being in non-industrial transport equipment, up \$1.4b.

Capital goods

The trend estimate of imports of capital goods rose \$3m to \$2,582m.

Seasonally adjusted, capital goods imports rose \$303m (13%) to \$2,680m.

Imports of capital goods, in original terms, rose \$467m (19%) to \$2,909m.

Contributing to the rise in the seasonally adjusted series were:

- Civil aircraft, up \$422m;
- ADP equipment, up \$105m (25%), compared to an average May to June rise over the previous three years of 7%; and
- Telecommunications equipment, up \$5m (1%), in contrast to an average May to June fall over the previous three years of 6%.

Capital goods imports in 2002-03 were \$4.2b higher than in 2001-02. Civil aircraft imports were up \$2.4b.

Intermediate and other goods

The trend estimate of imports of intermediate and other goods fell \$151m to \$4,888m.

Seasonally adjusted, intermediate and other goods imports fell \$145m (3%) to \$4,757m.

Imports of intermediate and other goods, in original terms, fell \$289m (6%) to \$4,666m.

ANALYSIS AND COMMENTS *continued*

Intermediate and other goods continued

Contributing to the fall in the seasonally adjusted series were:

- non-monetary gold, where the increase of \$3m (6%), was less than the average May to June rise over the previous three years of 90%;
- iron and steel, down \$34m (17%), compared to an average May to June fall over the previous three years of 5%; and
- organic and inorganic chemicals, down \$43m (14%), compared to an average May to June fall over the previous three years of 6%.

Partly offsetting these effects was a rise in imports of fuels and lubricants (mainly crude oil), up \$77m (10%), in contrast to an average May to June fall over the previous three years of 4%.

In 2002-03, imports of intermediate and other goods rose by \$4.2b compared to 2001-02. The biggest increase was in fuels and lubricants, up \$1.6b.

GOODS AND SERVICES(a), Summary: Seasonally adjusted and trend

Months	BALANCE	CREDITS					DEBITS					
	On goods and services	Total goods and services	Total goods	Rural goods(b)	Non-rural and other goods(b)	Total services	Total goods and services	Total goods	Consumption goods	Capital goods	Intermediate and other goods	Total services
	\$m	\$m	\$m	\$m	\$m	\$m	\$m	\$m	\$m	\$m	\$m	\$m
SEASONALLY ADJUSTED												
2002												
April	-515	12 506	9 913	2 506	7 407	2 593	-13 021	-10 315	-3 257	-2 300	-4 758	-2 706
May	-627	12 650	9 983	2 542	7 441	2 667	-13 277	-10 530	-3 297	-2 527	-4 706	-2 747
June	-914	12 331	9 760	2 354	7 406	2 571	-13 245	-10 535	-3 295	-2 411	-4 829	-2 710
July	-827	12 601	10 007	2 331	7 676	2 594	-13 428	-10 649	-3 293	-2 581	-4 775	-2 779
August	-909	12 649	9 993	2 392	7 601	2 656	-13 558	-10 786	-3 340	-2 393	-5 053	-2 772
September	-983	12 435	9 796	2 253	7 543	2 639	-13 418	-10 704	-3 464	-2 409	-4 831	-2 714
October	-1 053	12 780	10 014	2 399	7 615	2 766	-13 833	-11 030	-3 359	-2 643	-5 028	-2 803
November	-1 069	12 722	9 983	2 316	7 667	2 739	-13 791	-10 985	-3 489	-2 421	-5 075	-2 806
December	-2 984	12 556	9 778	2 075	7 703	2 778	-15 540	-12 687	-3 480	-3 807	-5 400	-2 853
2003												
January	-1 270	13 201	10 491	2 016	8 475	2 710	-14 471	-11 635	-3 635	-2 133	-5 867	-2 836
February	-1 873	12 361	9 722	1 998	7 724	2 639	-14 234	-11 402	-3 391	-2 768	-5 243	-2 832
March	-1 529	12 265	9 686	2 034	7 652	2 579	-13 794	-11 062	-3 184	-2 492	-5 386	-2 732
April	-3 048	11 192	8 769	1 859	6 910	2 423	-14 240	-11 620	-3 657	-2 705	-5 258	-2 620
May	-1 969	11 422	9 002	1 778	7 224	2 420	-13 391	-10 795	-3 516	-2 377	-4 902	-2 596
June	-2 067	11 374	8 911	1 776	7 135	2 463	-13 441	-10 876	-3 439	-2 680	-4 757	-2 565
TREND ESTIMATES												
2002												
April	-556	12 605	9 992	2 450	7 542	2 613	-13 161	-10 441	-3 256	-2 371	-4 814	-2 720
May	-661	12 562	9 953	2 439	7 514	2 609	-13 223	-10 491	-3 281	-2 408	-4 802	-2 732
June	-748	12 532	9 922	2 418	7 504	2 610	-13 280	-10 540	-3 301	-2 439	-4 800	-2 740
July	-831	12 527	9 903	2 393	7 510	2 624	-13 358	-10 611	-3 322	-2 472	-4 817	-2 747
August	-918	12 557	9 907	2 366	7 541	2 650	-13 475	-10 717	-3 356	-2 492	-4 869	-2 758
September	-1 021	12 620	9 934	2 331	7 603	2 686	-13 641	-10 867	-3 402	-2 501	-4 964	-2 774
October	-1 120	12 711	9 990	2 286	7 704	2 721	-13 831	-11 034	-3 441	-2 501	-5 092	-2 797
November	-1 251	12 778	10 036	2 231	7 805	2 742	-14 029	-11 211	-3 465	-2 509	-5 237	-2 818
December	-1 425	12 765	10 029	2 161	7 868	2 736	-14 190	-11 361	-3 472	-2 520	-5 369	-2 829
2003												
January	-1 627	12 626	9 931	2 082	7 849	2 695	-14 253	-11 435	-3 468	-2 529	-5 438	-2 818
February	-1 820	12 377	9 746	2 007	7 739	2 631	-14 197	-11 416	-3 460	-2 538	-5 418	-2 781
March	-1 988	12 065	9 502	1 939	7 563	2 563	-14 053	-11 326	-3 457	-2 549	-5 320	-2 727
April	-2 123	11 751	9 250	1 879	7 371	2 501	-13 874	-11 204	-3 459	-2 563	-5 182	-2 670
May	-2 225	11 476	9 025	1 826	7 199	2 451	-13 701	-11 083	-3 465	-2 579	-5 039	-2 618
June	-2 264	11 249	8 839	1 789	7 050	2 410	-13 513	-10 943	-3 473	-2 582	-4 888	-2 570

(a) For sign conventions, see paragraph 9 of the Explanatory Notes.

(b) For all time periods, estimates for sugar, sugar preparations and honey are included in Non-rural and other goods.

GOODS AND SERVICES (a), Summary: Original

	BALANCE	CREDITS					DEBITS					
	<i>On goods and services</i>	<i>Total goods and services</i>	<i>Total goods</i>	<i>Rural goods (b)</i>	<i>Non-rural and other goods (b)</i>	<i>Total services</i>	<i>Total goods and services</i>	<i>Total goods</i>	<i>Consumption goods</i>	<i>Capital goods</i>	<i>Intermediate and other goods</i>	<i>Total services</i>
	\$m	\$m	\$m	\$m	\$m	\$m	\$m	\$m	\$m	\$m	\$m	\$m
FINANCIAL YEAR												
2000-01	875	153 511	120 307	29 061	91 246	33 204	-152 636	-120 337	-35 775	-25 552	-59 010	-32 299
2001-02	-1 648	152 290	121 090	29 815	91 275	31 200	-153 938	-121 882	-37 422	-27 148	-57 312	-32 056
2002-03	-19 748	147 335	115 925	25 175	90 750	31 410	-167 083	-134 161	-41 233	-31 392	-61 536	-32 922
MONTHS												
2002												
April	-703	12 182	9 738	2 447	7 291	2 444	-12 885	-10 248	-3 172	-2 180	-4 896	-2 637
May	-983	12 435	10 081	2 639	7 442	2 354	-13 418	-10 776	-3 087	-2 779	-4 910	-2 642
June	-444	12 114	9 725	2 245	7 480	2 389	-12 558	-9 838	-2 902	-2 436	-4 500	-2 720
July	-1 086	13 141	10 205	2 266	7 939	2 936	-14 227	-11 283	-3 674	-2 777	-4 832	-2 944
August	-1 217	12 748	10 269	2 376	7 893	2 479	-13 965	-11 164	-3 602	-2 428	-5 134	-2 801
September	-1 677	12 255	9 906	2 167	7 739	2 349	-13 932	-10 989	-3 701	-2 484	-4 804	-2 943
October	-2 378	13 206	10 497	2 471	8 026	2 709	-15 584	-12 561	-3 994	-2 907	-5 660	-3 023
November	-1 417	12 710	10 033	2 377	7 656	2 677	-14 127	-11 383	-3 720	-2 436	-5 227	-2 744
December	-1 707	13 268	10 501	2 306	8 195	2 767	-14 975	-12 154	-3 321	-3 619	-5 214	-2 821
2003												
January	-1 794	12 082	9 024	1 807	7 217	3 058	-13 876	-10 955	-3 186	-2 081	-5 688	-2 921
February	-657	12 188	9 019	1 948	7 071	3 169	-12 845	-10 349	-3 165	-2 320	-4 864	-2 496
March	-1 091	12 411	9 896	2 107	7 789	2 515	-13 502	-10 896	-3 128	-2 425	-5 343	-2 606
April	-2 660	10 948	8 653	1 844	6 809	2 295	-13 608	-11 077	-3 364	-2 564	-5 149	-2 531
May	-1 821	11 258	9 091	1 840	7 251	2 167	-13 079	-10 585	-3 188	-2 442	-4 955	-2 494
June	-2 243	11 120	8 831	1 666	7 165	2 289	-13 363	-10 765	-3 190	-2 909	-4 666	-2 598
FINANCIAL YEAR TO DATE												
12 months ended Jun												
2002	-1 648	152 290	121 090	29 815	91 275	31 200	-153 938	-121 882	-37 422	-27 148	-57 312	-32 056
2003	-19 748	147 335	115 925	25 175	90 750	31 410	-167 083	-134 161	-41 233	-31 392	-61 536	-32 922

(a) For sign conventions, see paragraph 9 of the Explanatory Notes.

(b) For all time periods, estimates for sugar, sugar preparations and honey are included in Non-rural and other goods.

							12 MONTHS ENDED JUNE		Change %
	2000-01	2001-02	2002-03	Apr 2003	May 2003	Jun 2003	2002	2003	
	\$m	\$m	\$m	\$m	\$m	\$m	\$m	\$m	
Total goods credits	120 307	121 090	115 925	8 653	9 091	8 831	121 090	115 925	-4.3
Rural goods									
Meat and meat preparations	5 796	6 246	5 655	446	434	426	6 246	5 655	-9.5
Cereal grains and cereal preparations	5 834	6 211	4 187	299	341	236	6 211	4 187	-32.6
Wool and sheepskins	3 897	3 687	3 548	245	178	161	3 687	3 548	-3.8
Other rural	13 534	13 671	11 785	854	887	843	13 671	11 785	-13.8
<i>Total rural goods(a)</i>	<i>29 061</i>	<i>29 815</i>	<i>25 175</i>	<i>1 844</i>	<i>1 840</i>	<i>1 666</i>	<i>29 815</i>	<i>25 175</i>	<i>-15.6</i>
Non-rural goods									
Metal ores and minerals	15 205	14 774	14 471	1 155	1 174	1 245	14 774	14 471	-2.1
Coal, coke and briquettes	10 844	13 430	11 995	907	916	916	13 430	11 995	-10.7
Other mineral fuels	13 464	10 940	11 071	774	818	746	10 940	11 071	1.2
Metals (excl. gold)	10 146	9 650	8 691	643	634	667	9 650	8 691	-9.9
Machinery	8 797	7 999	7 352	582	613	582	7 999	7 352	-8.1
Transport equipment	5 041	5 686	6 280	375	553	435	5 686	6 280	10.4
Other manufactures	13 530	13 758	13 503	1 062	1 180	1 143	13 758	13 503	-1.9
Other non-rural(a)	6 809	7 419	8 694	771	704	697	7 419	8 694	17.2
<i>Total non-rural goods(a)</i>	<i>83 836</i>	<i>83 656</i>	<i>82 057</i>	<i>6 269</i>	<i>6 592</i>	<i>6 431</i>	<i>83 656</i>	<i>82 057</i>	<i>-1.9</i>
Other goods									
<i>Total other goods(b)</i>	<i>7 410</i>	<i>7 619</i>	<i>8 693</i>	<i>540</i>	<i>659</i>	<i>734</i>	<i>7 619</i>	<i>8 693</i>	<i>14.1</i>

(a) For all time periods, estimates for sugar, sugar preparations and honey are included in Other non-rural.

(b) Includes non-monetary gold.

GOODS DEBITS, Original(a)

	12 MONTHS TO JUNE								
	2000-01	2001-02	2002-03	Apr 2003	May 2003	Jun 2003	2002	2003	Change
	\$m	\$m	\$m	\$m	\$m	\$m	\$m	\$m	%
Total goods debits	-120 337	-121 882	-134 161	-11 077	-10 585	-10 765	-121 882	-134 161	10.1
Consumption goods									
Food and beverages, mainly for consumption	-4 483	-4 687	-5 066	-420	-402	-392	-4 687	-5 066	8.1
Household electrical items	-3 000	-3 166	-3 658	-290	-264	-280	-3 166	-3 658	15.5
Non-industrial transport equipment	-9 627	-9 930	-11 304	-1 036	-973	-988	-9 930	-11 304	13.8
Textiles, clothing and footwear	-4 811	-4 849	-5 238	-417	-352	-358	-4 849	-5 238	8.0
Toys, books and leisure goods	-3 359	-3 494	-3 740	-239	-270	-281	-3 494	-3 740	7.0
Consumption goods n.e.s.	-10 495	-11 296	-12 227	-962	-927	-891	-11 296	-12 227	8.2
<i>Total consumption goods</i>	<i>-35 775</i>	<i>-37 422</i>	<i>-41 233</i>	<i>-3 364</i>	<i>-3 188</i>	<i>-3 190</i>	<i>-37 422</i>	<i>-41 233</i>	<i>10.2</i>
Capital goods									
Machinery and industrial equipment	-8 876	-9 502	-11 007	-841	-866	-850	-9 502	-11 007	15.8
ADP equipment	-5 260	-5 055	-4 908	-416	-421	-526	-5 055	-4 908	-2.9
Telecommunications equipment	-4 379	-3 643	-3 619	-346	-348	-353	-3 643	-3 619	-0.7
Civil aircraft equipment	-609	-1 513	-3 887	-252	-112	-534	-1 513	-3 887	156.9
Industrial transport equipment n.e.s.	-2 753	-3 553	-3 746	-374	-345	-313	-3 553	-3 746	5.4
Capital goods n.e.s.	-3 675	-3 882	-4 225	-335	-350	-333	-3 882	-4 225	8.8
<i>Total capital goods</i>	<i>-25 552</i>	<i>-27 148</i>	<i>-31 392</i>	<i>-2 564</i>	<i>-2 442</i>	<i>-2 909</i>	<i>-27 148</i>	<i>-31 392</i>	<i>15.6</i>
Intermediate and other merchandise goods									
Food and beverages, mainly for industry	-592	-577	-736	-82	-56	-63	-577	-736	27.6
Primary industrial supplies n.e.s.	-1 133	-1 117	-1 220	-93	-84	-82	-1 117	-1 220	9.2
Fuels and lubricants	-10 358	-8 823	-10 400	-928	-738	-815	-8 823	-10 400	17.9
Parts for transport equipment	-7 089	-6 827	-7 270	-585	-597	-584	-6 827	-7 270	6.5
Parts for ADP equipment	-2 255	-2 159	-2 012	-153	-156	-168	-2 159	-2 012	-6.8
Other parts for capital goods	-9 072	-8 216	-8 607	-685	-715	-694	-8 216	-8 607	4.8
Organic and inorganic chemicals	-3 777	-3 447	-3 089	-242	-316	-273	-3 447	-3 089	-10.4
Paper and paperboard	-2 311	-2 225	-2 326	-179	-182	-167	-2 225	-2 326	4.5
Textile yarn and fabrics	-1 863	-1 830	-1 839	-141	-153	-144	-1 830	-1 839	0.5
Iron and steel	-1 437	-1 765	-1 961	-141	-196	-162	-1 765	-1 961	11.1
Plastics	-2 193	-2 182	-2 479	-214	-204	-174	-2 182	-2 479	13.6
Processed industrial supplies n.e.s.	-11 252	-11 441	-12 244	-1 159	-1 031	-856	-11 441	-12 244	7.0
Other merchandise goods	-1 320	-1 563	-1 709	-177	-89	-81	-1 563	-1 709	9.3
<i>Total intermediate and other merchandise goods</i>	<i>-54 652</i>	<i>-52 172</i>	<i>-55 892</i>	<i>-4 779</i>	<i>-4 517</i>	<i>-4 263</i>	<i>-52 172</i>	<i>-55 892</i>	<i>7.1</i>
Other goods									
<i>Total other goods(b)</i>	<i>-4 358</i>	<i>-5 140</i>	<i>-5 644</i>	<i>-370</i>	<i>-438</i>	<i>-403</i>	<i>-5 140</i>	<i>-5 644</i>	<i>9.8</i>

(a) For sign conventions, see paragraph 9 of the Explanatory Notes.

(b) Includes non-monetary gold.

SERVICES (a), Summary: **Original**

	12 MONTHS TO								
	JUNE								
	2000-01	2001-02	2002-03	Apr 2003	May 2003	Jun 2003	2002	2003	Change
	\$m	\$m	\$m	\$m	\$m	\$m	\$m	\$m	%
Credits									
Freight	1 038	1 001	925	74	74	75	1 001	925	-7.6
Other transportation	7 024	6 664	6 643	491	491	493	6 664	6 643	-0.3
Travel	15 366	14 775	14 485	947	815	907	14 775	14 485	-2.0
Other services	9 776	8 760	9 357	783	787	814	8 760	9 357	6.8
<i>Total services credits</i>	<i>33 204</i>	<i>31 200</i>	<i>31 410</i>	<i>2 295</i>	<i>2 167</i>	<i>2 289</i>	<i>31 200</i>	<i>31 410</i>	<i>0.7</i>
Debits(b)									
Freight	-5 991	-5 626	-5 810	-517	-508	-446	-5 626	-5 810	-3.3
Other transportation	-5 361	-5 150	-5 190	-361	-355	-406	-5 150	-5 190	-0.8
Travel	-11 189	-10 934	-11 025	-773	-750	-824	-10 934	-11 025	-0.8
Other services	-9 758	-10 346	-10 897	-880	-881	-922	-10 346	-10 897	-5.3
<i>Total services debits</i>	<i>-32 299</i>	<i>-32 056</i>	<i>-32 922</i>	<i>-2 531</i>	<i>-2 494</i>	<i>-2 598</i>	<i>-32 056</i>	<i>-32 922</i>	<i>-2.7</i>

(a) For more detailed trade in services by commodity, see Table 6.

(b) For sign conventions, see paragraph 9 of the Explanatory Notes.

	CREDITS				DEBITS			
	Sep Qtr	Dec Qtr	Mar Qtr	Jun Qtr	Sep Qtr	Dec Qtr	Mar Qtr	Jun Qtr
	2002	2002	2003	2003	2002	2002	2003	2003
	\$m	\$m	\$m	\$m	\$m	\$m	\$m	\$m
Services	7 764	8 153	8 742	6 751	-8 688	-8 588	-8 023	-7 623
Transportation services								
Passenger	1 679	1 729	1 760	1 475	-1 284	-1 083	-987	-912
Freight	243	237	222	223	-1 437	-1 482	-1 420	-1 471
Other	np	np	np	np	-254	-237	-223	-210
<i>Total transportation services</i>	1 922	1 966	1 982	1 698	-2 975	-2 802	-2 630	-2 593
Travel services								
Business	270	271	288	231	-701	-663	-747	-566
Personal								
Education-related	1 156	554	1 846	616	-204	-159	-176	-142
Other	2 242	2 735	2 454	1 822	-2 169	-2 027	-1 832	-1 639
Total personal	3 398	3 289	4 300	2 438	-2 373	-2 186	-2 008	-1 781
<i>Total travel services</i>	3 668	3 560	4 588	2 669	-3 074	-2 849	-2 755	-2 347
Communications services	264	331	234	236	-295	-452	-318	-301
Construction services	22	25	18	38	—	—	—	—
Insurance services	169	169	169	166	-214	-214	-214	-214
Financial services	196	196	196	196	-139	-139	-139	-139
Computer and information services	259	299	253	274	-133	-276	-183	-132
Royalties and licence fees	115	190	148	144	-476	-464	-440	-442
Other business services								
Merchanting and other trade-related	96	152	103	145	-113	-99	-96	-90
Operational leasing	9	4	4	10	-218	-249	-256	-252
Miscellaneous business, professional and technical								
Legal, accounting, management consulting and public relations	176	171	126	171	-70	-91	-106	-124
Advertising, market research and public opinion polling	24	34	48	37	-27	-40	-35	-57
Research and development	79	78	58	71	-38	-39	-27	-21
Architecture, engineering and other technical services	133	190	132	144	-213	-120	-100	-139
Agriculture, mining and on-site processing	9	11	4	9	-38	-38	-36	-38
Services between affiliated enterprises n.i.e.	209	307	249	280	-214	-259	-187	-209
Other	78	118	84	52	-88	-92	-105	-73
Total miscellaneous business, professional and technical	708	909	701	764	-688	-679	-596	-661
<i>Total other business services</i>	813	1 065	808	919	-1 019	-1 027	-948	-1 003
Personal, cultural, and recreational services								
Audiovisual and related services	26	37	46	18	-178	-155	-191	-215
Other personal, cultural and recreational services	123	127	112	160	-28	-42	-48	-35
<i>Total personal, cultural, and recreational services</i>	149	164	158	178	-206	-197	-239	-250
Government services n.i.e.	187	188	188	233	-157	-168	-157	-202

np not available for publication but included in totals where applicable, unless otherwise indicated
— nil or rounded to zero (including null cells)

(a) For sign conventions, see paragraph 9 of the Explanatory Notes.
(b) For more information see paragraphs 13 and 14 of the Explanatory Notes.

	Apr 2003	May 2003	Jun 2003	Percent of total merchandise exports(a)	12 MONTHS TO	
					JUNE	
					2002	2003
	\$m	\$m	\$m	%	\$m	\$m
MAJOR COMMODITIES						
011 Meat of bovine animals	309	301	287	3.3	4 333	3 901
041 Wheat	184	266	153	1.7	4 527	3 036
268 Wool and other animal hair	228	158	136	1.5	3 397	3 297
281 Iron ore and concentrates	380	438	434	4.9	5 160	5 317
285 Aluminium ore and concentrates	265	326	256	2.9	4 042	3 591
321 Coal, not agglomerated	906	914	906	10.3	13 403	11 949
333 Crude petroleum oils	464	369	367	4.2	5 963	5 892
334 Refined petroleum oils	108	226	137	1.6	2 358	2 441
343 Natural gas	199	194	245	2.8	2 612	2 632
684 Aluminium	310	320	280	3.2	4 412	4 055
781 Passenger motor vehicles	155	226	191	2.2	2 996	2 795
971 Gold, non-monetary	387	407	608	6.9	5 129	5 584
SECTION AND DIVISION OF THE SITC						
0 Food and live animals(b)						
00 Live animals other than fish, crustaceans, molluscs and aquatic invertebrates	85	81	69	0.8	1 112	1 166
01 Meat and meat preparations	446	433	417	4.7	6 249	5 645
02 Dairy products and birds' eggs	177	152	160	1.8	3 156	2 371
03 Fish (not marine mammals), crustaceans, molluscs and aquatic invertebrates, and preparations thereof(b)	105	104	102	1.2	1 663	1 485
04 Cereals and cereal preparations(b)	299	342	235	2.7	6 482	4 486
05 Vegetables and fruit	107	126	89	1.0	1 801	1 370
06 Sugars, sugar preparations and honey(b)	12	9	17	0.2	254	191
07 Coffee, tea, cocoa, spices, and manufactures thereof	20	18	21	0.2	263	298
08 Feeding stuff for animals (excl. unmilled cereals)(b)	68	68	65	0.7	981	873
09 Miscellaneous edible products and preparations	40	39	41	0.5	421	469
<i>Total food and live animals</i>	<i>1 359</i>	<i>1 371</i>	<i>1 216</i>	<i>13.8</i>	<i>22 380</i>	<i>18 354</i>
1 Beverages and tobacco						
11 Beverages	219	214	236	2.7	2 287	2 601
12 Tobacco and tobacco manufactures	9	4	3	—	74	118
<i>Total beverages and tobacco</i>	<i>228</i>	<i>218</i>	<i>239</i>	<i>2.7</i>	<i>2 360</i>	<i>2 719</i>
2 Crude materials, inedible, except fuels(b)						
21 Hides, skins and furskins, raw(b)	48	52	52	0.6	669	705
22 Oil seeds and oleaginous fruits	12	51	31	0.4	758	405
23 Crude rubber (incl. synthetic and reclaimed)	2	1	2	—	23	17
24 Cork and wood	93	73	90	1.0	882	994
25 Pulp and waste paper	5	4	4	—	59	52
26 Textile fibres and their wastes (not manufactured into yarn or fabric)(b)	284	240	225	2.6	4 983	4 487
27 Crude fertilisers (excl. those of Division 56) and crude minerals (excl. coal, petroleum and precious stones)	46	38	30	0.3	515	479
28 Metalliferous ores and metal scrap(b)	1 110	1 141	1 216	13.8	14 253	14 007
29 Crude animal and vegetable materials, n.e.s.	17	21	20	0.2	307	275
<i>Total crude materials, inedible, except fuels</i>	<i>1 617</i>	<i>1 622</i>	<i>1 671</i>	<i>19.0</i>	<i>22 448</i>	<i>21 419</i>
3 Mineral fuels, lubricants and related materials						
32 Coal, coke and briquettes	907	916	916	10.4	13 425	11 994
33 Petroleum, petroleum products and related materials	573	596	504	5.7	8 369	8 348
34 Gas, natural and manufactured	258	275	291	3.3	3 336	3 488
<i>Total mineral fuels, lubricants and related materials</i>	<i>1 737</i>	<i>1 786</i>	<i>1 711</i>	<i>19.4</i>	<i>25 130</i>	<i>23 830</i>

— nil or rounded to zero (including null cells)

(a) Percent of total merchandise exports is calculated for the most recent month.

(b) Excludes export commodities subject to a confidentiality restriction. These are included in Division 98.

					12 MONTHS TO		
	Apr	May	Jun	Percent of total merchandise exports(a)	JUNE		
	2003	2003	2003		2002	2003	
	\$m	\$m	\$m	%	\$m	\$m	
SECTION AND DIVISION OF THE SITC <i>cont.</i>							
4	Animal and vegetable oils, fats and waxes(b)						
41	Animal oils and fats	22	27	8	0.1	210	225
42	Fixed vegetable fats and oils, crude, refined or fractionated(b)	5	2	1	—	47	46
43	Fats and oils (processed), waxes and inedible mixtures or preparations, of animal or vegetable origin, n.e.s.	5	4	4	—	53	52
	<i>Total animal and vegetable oils, fats and waxes</i>	32	32	14	0.2	310	324
5	Chemicals and related products, n.e.s.(b)						
51	Organic chemicals(b)	15	17	11	0.1	141	153
52	Inorganic chemicals(b)	31	65	48	0.5	532	566
53	Dyeing, tanning and colouring materials	52	53	52	0.6	663	650
54	Medicinal and pharmaceutical products	194	188	196	2.2	2 262	2 004
55	Essential oils and resinoids and perfume materials; toilet, polishing and cleansing preparations	33	39	34	0.4	431	469
56	Fertilisers (excl. crude)	5	6	14	0.2	94	129
57	Plastics in primary forms(b)	15	17	17	0.2	247	211
58	Plastics in non-primary forms	26	18	16	0.2	250	248
59	Chemical materials and products, n.e.s.	50	51	57	0.6	673	664
	<i>Total chemicals and related products, n.e.s.</i>	423	454	445	5.1	5 293	5 092
6	Manufactured goods classified chiefly by material(b)						
61	Leather, leather manufactures, and dressed furskins, nes	44	46	36	0.4	551	606
62	Rubber manufactures, n.e.s.	11	11	12	0.1	157	133
63	Cork and wood manufactures (excl. furniture)(b)	16	18	16	0.2	211	203
64	Paper, paperboard, and articles of paper pulp, of paper or of paperboard	73	69	68	0.8	757	764
65	Textile yarn, fabrics, made-up articles, nes, and related products	41	41	42	0.5	536	496
66	Non-metallic mineral manufactures, n.e.s.(b)	55	63	65	0.7	956	884
67	Iron and steel(b)	70	82	89	1.0	792	805
68	Non-ferrous metals	573	551	572	6.5	8 854	7 877
69	Manufactures of metals, n.e.s.	59	69	65	0.7	757	808
	<i>Total manufactured goods classified chiefly by material</i>	941	948	964	11.0	13 572	12 578
7	Machinery and transport equipment						
71	Power generating machinery and equipment	55	50	65	0.7	705	656
72	Machinery specialised for particular industries	111	104	90	1.0	1 398	1 263
73	Metal working machinery	10	11	13	0.1	195	132
74	General industrial machinery and equipment, n.e.s. and machine parts, n.e.s.(b)	107	120	105	1.2	1 290	1 303
75	Office machines and automatic data processing machines	105	117	111	1.3	1 657	1 480
76	Telecommunications and sound recording and reproducing apparatus and equipment	61	69	62	0.7	1 083	808
77	Electrical machinery, apparatus, appliances, parts (incl. non-elec. counterparts of electrical domestic equip)	129	136	121	1.4	1 680	1 667
78	Road vehicles (incl. air-cushion vehicles)	273	340	306	3.5	4 293	4 184
79	Transport equipment (excl. road vehicles)	155	159	120	1.4	1 860	2 011
	<i>Total machinery and transport equipment</i>	1 005	1 107	992	11.3	14 160	13 504

— nil or rounded to zero (including null cells)

(b) Excludes export commodities subject to a confidentiality restriction. These are included in Division 98.

(a) Percent of total merchandise exports is calculated for the most recent month.

INTERNATIONAL MERCHANDISE EXPORTS, By commodity *continued*

				Percent of total merchandise exports(a)	12 MONTHS TO JUNE	
	Apr	May	Jun		
	2003	2003	2003		2002	2003
	\$m	\$m	\$m	%	\$m	\$m
SECTION AND DIVISION OF THE SITC <i>cont.</i>						
8	Miscellaneous manufactured articles(b)					
81	Prefabricated buildings; sanitary, plumbing, heating and lighting fixtures and fittings, n.e.s.					
	8	9	9	0.1	109	119
82	Furniture, parts thereof; bedding, mattresses, mattress supports, cushions and similar stuffed furnishings					
	14	13	13	0.1	165	174
83	Travel goods, handbags and similar containers					
	1	2	1	—	15	17
84	Articles of apparel and clothing accessories					
	26	37	32	0.4	349	335
85	Footwear(b)					
	5	4	4	—	62	53
87	Professional, scientific and controlling instruments and apparatus, n.e.s.					
	103	119	96	1.1	1 344	1 238
88	Photographic apparatus, equipment and supplies and optical goods, n.e.s.; watches and clocks					
	45	51	40	0.5	937	658
89	Miscellaneous manufactured articles, n.e.s.					
	131	163	160	1.8	1 502	1 802
	<i>Total miscellaneous manufactured articles</i>					
	334	397	355	4.0	4 483	4 396
9	Commodities and transactions not classified elsewhere in the SITC(b)					
93	Special transactions and commodities not classified according to kind					
	144	259	131	1.5	2 252	2 899
95	Gold coin whether or not legal tender, and other coin being legal tender					
	6	4	1	—	65	78
96	Coin (excl. gold coin), not being legal tender					
	—	—	—	—	—	—
97	Gold, non-monetary (excl. gold ores and concentrates)					
	387	407	608	6.9	5 129	5 584
98	Combined confidential items excl some of SITC 280 (exports only) and some of SITCs 510 and 520 (imports only)(c)(d)					
	459	399	451	5.1	3 526	4 668
	<i>Total commodities and transactions not classified elsewhere in the SITC</i>					
	997	1 068	1 190	13.5	10 973	13 229
Total Merchandise Exports						
	8 672	9 004	8 797	100.0	121 108	115 445
Balance of Payments Adjustments						
	-19	87	34	..	-18	480
Goods Credits (exports) on a Balance of Payments Basis						
	8 653	9 091	8 831	..	121 090	115 925

— nil or rounded to zero (including null cells)

.. not applicable

(a) Percent of total merchandise exports is calculated for the most recent month.

(b) Excludes export commodities subject to a confidentiality restriction. These are included in Division 98.

(c) Includes exports commodities subject to a confidentiality restriction.

(d) Includes small value export entries which cannot yet be allocated by commodity.

				Percent of total merchandise imports(a)	12 MONTHS ENDED JUNE		
	Apr	May	Jun			
	2003	2003	2003		2002	2003	
	\$m	\$m	\$m	%	\$m	\$m	
MAJOR COMMODITIES							
333	Crude petroleum oils	737	479	569	5.3	6 785	7 812
334	Refined petroleum oils	183	253	236	2.2	1 829	2 416
542	Medicaments	346	342	339	3.2	4 002	4 241
641	Paper and paperboard	160	165	150	1.4	1 868	2 076
752	Automatic data processing machines	406	418	523	4.9	5 028	4 871
759	Parts and accessories of office machines	177	183	196	1.8	2 491	2 376
764	Telecommunications equipment	397	380	384	3.6	4 507	4 239
781	Passenger motor vehicles	956	906	919	8.6	8 955	10 283
782	Motor vehicles for the transport of goods	293	279	229	2.1	2 545	2 888
784	Parts and accessories of motor vehicles	201	197	190	1.8	2 217	2 311
792	Aircraft and associated equipment	342	113	721	6.7	3 060	5 481
971	Gold, non-monetary	157	232	188	1.7	2 219	2 959

SECTION AND DIVISION OF THE SITC

0	Food and live animals						
00	Live animals other than fish, crustaceans, molluscs and aquatic invertebrates	14	4	4	—	73	93
01	Meat and meat preparations	23	18	18	0.2	234	201
02	Dairy products and birds' eggs	33	26	26	0.2	309	321
03	Fish (not marine mammals), crustaceans, molluscs and aquatic invertebrates, and preparations thereof	83	74	74	0.7	890	952
04	Cereals and cereal preparations	44	25	34	0.3	289	391
05	Vegetables and fruit	73	72	73	0.7	821	923
06	Sugars, sugar preparations and honey	21	17	15	0.1	135	183
07	Coffee, tea, cocoa, spices, and manufactures thereof	60	53	54	0.5	625	699
08	Feeding stuff for animals (excl. unmilled cereals)	46	15	19	0.2	273	331
09	Miscellaneous edible products and preparations	76	89	86	0.8	962	1 014
	<i>Total food and live animals</i>	<i>471</i>	<i>394</i>	<i>403</i>	<i>3.8</i>	<i>4 613</i>	<i>5 108</i>
1	Beverages and tobacco						
11	Beverages	51	50	44	0.4	665	725
12	Tobacco and tobacco manufactures	29	24	24	0.2	198	337
	<i>Total beverages and tobacco</i>	<i>80</i>	<i>75</i>	<i>68</i>	<i>0.6</i>	<i>864</i>	<i>1 062</i>
2	Crude materials, inedible, except fuels						
21	Hides, skins and furskins, raw	—	—	—	—	5	2
22	Oil seeds and oleaginous fruits	2	9	8	0.1	25	67
23	Crude rubber (incl. synthetic and reclaimed)	13	12	12	0.1	120	137
24	Cork and wood	47	49	45	0.4	509	591
25	Pulp and waste paper	16	21	21	0.2	226	263
26	Textile fibres and their wastes (not manufactured into yarn or fabric)	16	15	14	0.1	155	171
27	Crude fertilisers (excl. those of Division 56) and crude minerals (excl. coal, petroleum and precious stones)	15	16	6	0.1	202	187
28	Metalliferous ores and metal scrap	18	21	15	0.1	247	244
29	Crude animal and vegetable materials, n.e.s.	25	21	18	0.2	266	291
	<i>Total crude materials, inedible, except fuels</i>	<i>152</i>	<i>164</i>	<i>138</i>	<i>1.3</i>	<i>1 756</i>	<i>1 953</i>
3	Mineral fuels, lubricants and related materials(b)						
32	Coal, coke and briquettes	1	1	1	—	17	19
33	Petroleum, petroleum products and related materials	950	741	827	7.7	8 893	10 506
34	Gas, natural and manufactured	1	1	1	—	119	78
	<i>Total mineral fuels, lubricants and related materials</i>	<i>953</i>	<i>743</i>	<i>828</i>	<i>7.7</i>	<i>9 030</i>	<i>10 603</i>

— nil or rounded to zero (including null cells)

(b) Excludes imports commodities subject to a confidentiality restriction.

(a) Percent of total merchandise trade is calculated for the most recent month.

These are included in Division 98.

	Apr 2003	May 2003	Jun 2003	Percent of total merchandise imports(a)	12 MONTHS ENDED JUNE	
					2002	2003
					\$m	\$m
SECTION AND DIVISION OF THE SITC <i>cont.</i>						
4	Animal and vegetable oils, fats and waxes					
41	1	2	1	—	16	20
42	33	25	20	0.2	238	303
43	Fats and oils (processed), waxes and inedible mixtures or preparations, of animal or vegetable origin, n.e.s.					
	3	3	4	—	35	41
	37	30	24	0.2	289	364
5	Chemicals and related products, n.e.s.(b)					
51	178	269	219	2.0	2 501	2 442
52	64	47	54	0.5	947	647
53	49	43	42	0.4	545	565
54	495	443	403	3.8	5 009	5 286
55	Essential oils and resinoids and perfume materials; toilet, polishing and cleansing preparations					
	106	96	99	0.9	1 168	1 299
56	114	89	37	0.3	801	774
57	131	116	96	0.9	1 192	1 406
58	83	88	78	0.7	988	1 074
59	127	136	122	1.1	1 486	1 537
	1 347	1 328	1 150	10.7	14 635	15 029
6	Manufactured goods classified chiefly by material(b)					
61	14	15	13	0.1	210	194
62	144	153	145	1.3	1 607	1 753
63	53	54	43	0.4	600	682
64	Paper, paperboard, and articles of paper pulp, of paper or of paperboard(b)					
	192	197	179	1.7	2 363	2 497
65	Textile yarn, fabrics, made-up articles, n.e.s., and related products					
	215	226	210	2.0	2 562	2 723
66	166	162	165	1.5	1 970	2 116
67	141	196	162	1.5	1 764	1 962
68	102	86	57	0.5	954	1 015
69	248	255	226	2.1	2 790	3 134
	1 277	1 344	1 199	11.2	14 819	16 076
7	Machinery and transport equipment(b)					
71	225	255	244	2.3	3 034	3 220
72	360	336	355	3.3	4 050	4 543
73	99	95	64	0.6	529	849
74	General industrial machinery and equipment, n.e.s. and machine parts, n.e.s.					
	512	564	528	4.9	6 221	7 065
75	618	642	755	7.0	7 965	7 731
76	Telecommunications and sound recording and reproducing apparatus and equipment					
	600	576	618	5.8	6 862	7 004
77	Electrical machinery, apparatus, appliances, parts (incl. non-elec. counterparts of electrical domestic equip)(b)					
	582	564	566	5.3	6 629	6 959
78	1 561	1 489	1 447	13.5	14 895	16 828
79	396	142	758	7.1	3 468	6 454
	4 954	4 662	5 336	49.7	53 654	60 653

— nil or rounded to zero (including null cells)

(b) Excludes imports commodities subject to a confidentiality restriction.

(a) Percent of total merchandise trade is calculated for the most recent month.

These are included in Division 98.

	Apr 2003	May 2003	Jun 2003	Percent of total merchandise imports(a)	12 MONTHS ENDED JUNE	
					
					2002	2003
	\$m	\$m	\$m	%	\$m	\$m
SECTION AND DIVISION OF THE SITC <i>cont.</i>						
8	Miscellaneous manufactured articles(b)					
81	Prefabricated buildings; sanitary, plumbing, heating and lighting fixtures and fittings, n.e.s.					
	39	34	31	0.3	387	445
82	Furniture, parts thereof; bedding, mattresses, mattress supports, cushions and similar stuffed furnishings					
	112	113	107	1.0	1 194	1 485
83	Travel goods, handbags and similar containers					
	34	29	28	0.3	461	479
84	Articles of apparel and clothing accessories					
	289	232	237	2.2	3 215	3 420
85	Footwear					
	62	54	63	0.6	978	1 018
87	Professional, scientific and controlling instruments and apparatus, n.e.s.					
	256	265	267	2.5	2 998	3 057
88	Photographic apparatus, equipment and supplies and optical goods, n.e.s.; watches and clocks(b)					
	117	96	104	1.0	1 574	1 511
89	Miscellaneous manufactured articles, n.e.s.					
	590	543	521	4.9	6 609	7 300
	<i>Total miscellaneous manufactured articles</i>					
	1 498	1 367	1 357	12.6	17 416	18 716
9	Commodities and transactions not classified elsewhere in the SITC(b)					
93	Special transactions and commodities not classified according to kind					
	3	2	2	—	43	34
95	Gold coin whether or not legal tender, and other coin being legal tender					
	—	—	—	—	11	4
96	Coin (excl. gold coin), not being legal tender					
	—	—	—	—	1	1
97	Gold, non-monetary (excl. gold ores and concentrates)					
	157	232	188	1.7	2 219	2 959
98	Combined confidential items excl some of SITC 280 (exports only) and some of SITCs 510 and 520 (imports only)(c)					
	24	31	35	0.3	299	593
	<i>Total commodities and transactions not classified elsewhere in the SITC</i>					
	184	265	225	2.1	2 573	3 591
Total Merchandise Imports						
	10 953	10 371	10 729	100.0	119 649	133 154
Balance of Payments Adjustments						
	124	214	36	—	2 233	1 007
Goods Debits (imports) on a Balance of Payments Basis						
	11 077	10 585	10 765	—	121 882	134 161

— nil or rounded to zero (including null cells)

(a) Percent of total merchandise trade is calculated for the most recent month.

(b) Excludes imports commodities subject to a confidentiality restriction. These are included in Division 98.

(c) Includes imports commodities subject to a confidentiality restriction.

INTERNATIONAL MERCHANDISE TRADE, By country and country groups(a)

Country	EXPORTS				IMPORTS				BALANCE OF MERCHANDISE TRADE	
	2001-02	Jun 2003	12 months ended	12 months ended	2001-02	Jun 2003	12 months ended	12 months ended	2001-02	2003
			June 2002	June 2003			June 2002	June 2003		
	\$m	\$m	\$m	\$m	\$m	\$m	\$m	\$m	\$m	\$m
Belgium-Luxembourg	862	54	862	851	876	106	876	1 153	-14	-302
Brazil	457	45	457	408	470	35	470	490	-13	-81
Canada	1 900	163	1 900	1 815	1 607	161	1 607	1 755	293	60
China	7 816	669	7 816	8 780	11 275	1 034	11 275	13 792	-3 458	-5 012
Denmark	108	12	108	125	671	62	671	770	-563	-645
Egypt(b)	754	7	754	370	20	1	20	20	734	350
Fiji	529	43	529	542	232	14	232	222	297	320
Finland	392	44	392	442	727	49	727	680	-335	-238
France	1 343	77	1 343	1 172	2 691	237	2 691	3 781	-1 348	-2 610
Germany	1 349	94	1 349	1 572	6 729	634	6 729	7 952	-5 380	-6 380
Hong Kong (Sar of China)	3 996	217	3 996	3 216	1 410	132	1 410	1 234	2 586	1 982
India	2 524	276	2 524	2 573	874	73	874	979	1 650	1 594
Indonesia	3 194	211	3 194	2 906	4 010	290	4 010	4 598	-817	-1 692
Iran	785	14	785	413	39	3	39	40	746	373
Iraq	840	12	840	360	—	—	—	37	840	324
Ireland	307	12	307	182	1 469	116	1 469	1 607	-1 163	-1 425
Israel	291	5	291	194	525	31	525	481	-235	-286
Italy	2 165	127	2 165	1 858	3 410	310	3 410	4 149	-1 246	-2 291
Japan	22 796	1 599	22 796	21 738	15 463	1 436	15 463	16 336	7 333	5 403
Korea, Republic of	9 818	635	9 818	9 107	4 722	347	4 722	4 754	5 096	4 354
Kuwait	518	38	518	518	133	19	133	184	385	334
Malaysia	2 519	169	2 519	2 147	3 857	340	3 857	4 261	-1 338	-2 114
Mexico	478	45	478	428	521	52	521	572	-42	-144
Netherlands	1 522	106	1 522	1 362	1 094	104	1 094	1 284	428	79
New Zealand	7 669	664	7 669	8 104	4 740	379	4 740	5 020	2 929	3 084
Pakistan	477	29	477	286	200	12	200	192	277	94
Papua New Guinea	1 013	74	1 013	947	1 124	144	1 124	1 505	-111	-558
Philippines	1 252	119	1 252	1 091	623	59	623	815	629	276
Saudi Arabia	2 598	117	2 598	1 989	1 026	71	1 026	1 284	1 572	705
Singapore	4 936	278	4 936	4 643	3 972	353	3 972	4 397	963	246
South Africa	1 341	95	1 341	1 317	870	100	870	1 060	471	257
Spain	792	59	792	670	761	80	761	1 047	31	-377
Sweden	220	23	220	212	1 625	139	1 625	1 810	-1 405	-1 598
Switzerland	227	15	227	380	1 302	91	1 302	1 230	-1 075	-850
Taiwan	4 828	293	4 828	4 314	3 132	291	3 132	3 387	1 697	927
Thailand	2 291	221	2 291	2 476	2 886	274	2 886	3 468	-595	-992
Turkey	317	17	317	298	186	18	186	223	132	75
United Arab Emirates	1 245	63	1 245	1 234	749	94	749	747	496	487
United Kingdom	5 199	739	5 199	7 230	6 219	438	6 219	5 770	-1 020	1 459
United States of America	12 008	745	12 008	10 360	21 488	2 057	21 488	22 507	-9 480	-12 148
Viet Nam	497	34	497	472	1 855	171	1 855	2 504	-1 358	-2 032
Other Countries(c)	6 935	540	6 935	6 344	4 065	372	4 065	5 060	2 871	1 285
Total trade	121 108	8 797	121 108	115 445	119 649	10 729	119 649	133 154	1 460	-17 709
APEC	87 452	6 159	87 452	82 930	83 816	7 614	83 816	92 275	3 636	-9 346
ASEAN	14 807	1 037	14 807	13 831	17 634	1 525	17 634	20 747	-2 827	-6 916
Developing Countries	57 330	3 829	57 330	52 898	44 930	3 885	44 930	51 222	12 401	1 676
European Union	14 486	1 371	14 486	15 838	27 122	2 363	27 122	31 401	-12 636	-15 563
OECD	69 882	5 269	69 882	68 282	78 154	6 983	78 154	84 808	-8 273	-16 526

— nil or rounded to zero (including null cells)

(c) Include small value export entries which cannot yet be allocated by country.

(a) See AusStats for details of all countries.

(b) Exports of Alumina to Egypt are excluded from its country total and included in the 'Other Countries' category.

	12 MONTHS ENDED JUNE			
	2001-02	June 2003	2002	2003
	\$m	\$m	\$m	\$m
.....				
EXPORTS (a)				
New South Wales	22 920	1 445	22 920	20 201
Victoria	22 242	1 343	22 242	18 881
Queensland	23 151	1 718	23 151	21 365
South Australia	9 103	577	9 103	8 359
Western Australia	30 222	2 740	30 222	32 387
Tasmania	2 388	161	2 388	2 452
Northern Territory	2 948	174	2 948	2 620
Australian Capital Territory	11	—	11	4
State not available for publication(b)(c)	529	123	529	529
Re-exports	7 593	517	7 593	8 648
Total exports	121 108	8 797	121 108	115 445
.....				
IMPORTS				
New South Wales	51 902	4 560	51 902	55 247
Victoria	37 558	3 371	37 558	42 131
Queensland	14 218	1 456	14 218	16 362
South Australia	5 347	404	5 347	5 730
Western Australia	9 320	840	9 320	11 756
Tasmania	518	42	518	777
Northern Territory	780	57	780	934
Australian Capital Territory	5	—	5	217
Total imports	119 649	10 729	119 649	133 154

— nil or rounded to zero (including null cells)

- (a) State in which the final stage of production or manufacture occurs.
- (b) Includes exports which cannot yet be allocated by state. These shipments will be appropriately classified as more details become available.
- (c) Exports of Alumina to Bahrain, Egypt and Iceland are excluded from the state totals and included in 'State not available for publication' category.

PERIOD AVERAGE EXCHANGE RATES, Per Australian Dollar(a)

<i>Period</i>	<i>United States dollar</i>	<i>United Kingdom pound</i>	<i>Euro</i>	<i>Japanese yen</i>	<i>Trade-weighted index of value of the \$A(b)</i>
FINANCIAL YEAR					
2000-01	0.5379	0.3704	0.6023	61.49	50.3
2001-02	0.5239	0.3632	0.5850	66.10	50.7
2002-03	0.5848	0.3685	0.5577	70.01	53.5
MONTHS					
2002					
April	0.5354	0.3713	0.6047	70.06	52.3
May	0.5497	0.3765	0.6000	69.55	52.6
June	0.5694	0.3839	0.5962	70.29	53.4
July	0.5544	0.3564	0.5580	65.43	51.2
August	0.5422	0.3527	0.5543	64.48	50.5
September	0.5470	0.3517	0.5578	66.01	51.1
October	0.5498	0.3530	0.5601	68.09	51.7
November	0.5611	0.3570	0.5604	68.19	52.2
December	0.5627	0.3555	0.5535	68.81	52.1
2003					
January	0.5825	0.3605	0.5490	69.21	52.9
February	0.5947	0.3691	0.5520	71.00	53.9
March	0.6023	0.3804	0.5577	71.43	54.6
April	0.6090	0.3869	0.5610	72.92	55.3
May	0.6470	0.3989	0.5601	75.91	57.4
June	0.6643	0.4000	0.5689	78.58	58.8

- (a) These exchange rates and the trade-weighted index are derived using rates provided by the Reserve Bank of Australia in respect of each trading day.
- (b) May 1970=100. The trade-weighted index is reweighted annually (on 1 October) and on special occasions if required.

EXPLANATORY NOTES

INTRODUCTION

1 This publication presents preliminary estimates of Australia's international trade in goods and services on a balance of payments basis and merchandise import and export statistics on a recorded trade basis.

2 Merchandise trade statistics on a recorded trade basis are compiled from information submitted by exporters and importers or their agents to the Australian Customs Service (ACS). Adjustments for coverage, timing and valuation are made to recorded trade data to convert them to a balance of payments basis. The main source for services data is the quarterly Survey of International Trade in Services.

3 More comprehensive quarterly estimates of Australia's trade in goods and services, together with comprehensive details of Australia's balance of payments are included in the quarterly publication, *Balance of Payments and International Investment Position, Australia* (cat.no.5302.0). Detailed monthly statistics on merchandise trade are available on AusStats or by subscription to tailored services.

CONCEPTS, SOURCES AND METHODS

4 The conceptual framework used in compiling Australia's merchandise trade statistics can be found in *International Merchandise Trade, Australia: Concepts, Sources and Methods, 2001* (cat.no.5489.0).

5 The conceptual framework used in compiling Australia's balance of payments statistics is based on the Fifth Edition of the International Monetary Fund's *Balance of Payments Manual* (BPM5,1993). Descriptions of the underlying concepts and structure of the balance of payments and the sources, methods and terms used in compiling the estimates are presented in *Balance of Payments and International Investment Position, Australia: Concepts, Sources and Methods, 1998* (cat.no.5331.0). To bring merchandise trade statistics on a recorded trade basis to a balance of payment basis, timing adjustments are made to ensure that the transaction is recorded in the period in which ownership changed, rather than in the period in which the transaction was recorded by ACS. Adjustments are also made to imports to take account of distortions which arise when significant changes occur in the volume of import entries lodged but not yet processed by ACS in a given month. Chapter 6 of cat. no. 5331.0 provides more detail on the relationship between statistics on international merchandise trade on a recorded trade basis and on a balance of payments basis.

6 Both of the Concepts, Sources and Methods publications are available for free from the ABS web site, see <<http://www.abs.gov.au>> -select *About Statistics* then *Concepts & Classifications*.

SEASONAL ADJUSTMENT

7 Monthly original estimates are volatile, being subject to calendar-related and large irregular influences. Seasonally adjusted estimates are derived by estimating and removing systematic calendar related effects, such as seasonal and trading day influences, from the original series. Seasonal adjustment does not aim to remove the irregular or non-seasonal influences which may be present in any particular month. These irregular influences may reflect both random economic events and difficulties of statistical recording. The international trade in goods and services on a balance of payments basis estimates are seasonally adjusted. The merchandise exports and imports statistics on a recorded trade basis are not.

TREND ESTIMATES

8 The month-to-month movements of the seasonally adjusted estimates may not be reliable indicators of trend behaviour because they include irregular or non-seasonal movements. Trend estimates are derived by applying a 13-term Henderson moving average to the seasonally adjusted series. The use of a 13-term Henderson average can result in revisions to the estimates for the most recent six months as additional observations become available. Revisions can also occur because of changes in the original data and as a result of the annual re-estimation of the seasonal factors.

EXPLANATORY NOTES *continued*

SIGN CONVENTION

9 In keeping with balance of payments conventions, where statistics are on a balance of payments basis, credit entries (exports) are shown without sign and debit items (imports) are shown as negative entries. For statistics on a recorded trade basis, both imports and exports are shown without sign. References to balance of payments debit items in Key Figures, Key Points, and Analysis and Comments are also made without regard to sign.

COMMODITY BREAKDOWNS OF GOODS

10 For details of the classification used for goods exports on a balance of payments basis (credits), see table 6.6 in *Balance of Payments and International Investment Position, Australia: Concepts, Sources and Methods, 1998* (cat.no.5331.0).

11 Details of the classification of goods imports on a balance of payments basis (debits) are provided in table 6.7 in cat. no. 5331.0. Most of the commodity groups shown in table 4 for goods debits are available for more detailed sub-groups from AusStats.

12 The recorded trade statistics shown in tables 7 and 8 are classified by the Standard International Trade Classification 2 (SITC). The first section of tables 7 and 8 show the most significant commodities (by value) at the SITC 3 digit level.

COMMODITY BREAKDOWNS OF SERVICES

13 The quarterly detailed services data published in Table 6 are consistent with the monthly aggregates shown in Table 5. Services trade data by major partner countries and by Australian state of production/consumption are published on a financial year basis and a calendar year basis.

14 Monthly indicators for many of the services components that are only surveyed quarterly are not available. In particular, the Freight and Other transportation components of Total services credits are not available for publication on a monthly basis. The estimates for these items shown in table 5 are therefore derived by dividing the quarterly estimate by three.

RELATED PRODUCTS OR SERVICES

15 More detailed balance of payments and recorded merchandise trade data, including forward seasonal factors, are available from AusStats. Very detailed merchandise trade data by commodity, country and state are available by contacting the National Information and Referral Service, as shown on the back of this publication.

16 Users may also wish to refer to the following publications which are available from ABS Bookshops and on the ABS web site:

- *Balance of Payments and International Investment Position, Australia* (cat.no.5302.0) - issued quarterly
- *International Merchandise Imports, Australia* (cat.no.5439.0) - issued monthly
- *International Trade Price Indexes, Australia* (cat.no.6457.0) - issued quarterly
- *Balance of Payments and International Investment Position, Australia: Concepts, Sources and Methods* (cat.no.5331.0)
- *Information Paper: Quality of Australian Balance of Payments Statistics* (cat.no.5342.0)
- *International Merchandise Trade, Australia: Concepts, Sources and Methods* (cat.no.5489.0)
- *A Guide to Australian Balance of Payments and International Investment Position Statistics* (cat.no.5362.0.55.001).

17 The last four publications are available for free on the ABS web site <<http://www.abs.gov.au>> - select *About Statistics* then *Concepts & Classifications*.

APPENDIX RELATED ARTICLES

<i>Article</i>	<i>Source</i>	<i>Issue</i>
Investment		
Foreign ownership of equity	5302.0	Sep qtr 2002
Measuring Australia's foreign currency exposure	5302.0	Dec qtr 2001
Balance of payments		
Export and import currencies	5422.0	Mar qtr 2003
International comparison of balance of payments statistics	5363.0	1999–2000
The Sydney Olympic Games	5302.0	Sep qtr 1999
Merchandise trade		
Export and import currencies	5422.0	Mar qtr 2003
Australia's exporters and importers, 2001–02	5422.0	Dec qtr 2002
Trade through Australia's ports	5422.0	Sep qtr 2002
Goods and selected services by region, 2000–2001	5368.0	Feb 2002
Australia's trade in wine	5422.0	Dec qtr 2001
Australia's export markets, 1991–92 to 2000–01	5422.0	Jun qtr 2001
Major commodities traded by Australia, 1991 to 2000	5422.0	Dec qtr 2000
Australia's trade in crude petroleum	5422.0	Mar qtr 2000
Australia's merchandise trade with Korea	5422.0	Sep qtr 1999
Australia's merchandise trade with Japan	5422.0	Mar qtr 1999
Bilateral merchandise trade statistics reconciliation: Australia and the European Union, 1992 to 1997	5422.0	Sep qtr 1998
Trade in services		
Goods and selected services by region, 2000–2001	5368.0	Feb 2002
International Trade in Services by Partner Country, 2002	(a) Website	May 2002
International Trade in Services by State, 2002	(a) Website	May 2002
International Trade in Goods and Services by Partner Country, 2001–02	(a) Website	Oct 2002
International Trade in Goods and Services by State, 2001–02	(a) Website	Oct 2002
International trade in education services	5302.0	Sep Qtr 2001
Technical information		
Changes to Country and Port Classifications	5368.0	Jun 2003
The effect of Customs changes on export statistics	5422.0	Jun qtr 2002
Harmonized system changes	5422.0	Sep Qtr 2001
International trade review: data quality and client queries	5422.0	Jun qtr 2000
Data confidentiality	5422.0	Dec qtr 1999
Change to value threshold for imports	5422.0	Jun qtr 1998

(a) International Trade Theme Page: Select Themes; International Trade; Topic of interest.

FOR MORE INFORMATION . . .

- INTERNET* **www.abs.gov.au** the ABS web site is the best place to start for access to summary data from our latest publications, information about the ABS, advice about upcoming releases, our catalogue, and Australia Now—a statistical profile.
- LIBRARY* A range of ABS publications is available from public and tertiary libraries Australia-wide. Contact your nearest library to determine whether it has the ABS statistics you require, or visit our web site for a list of libraries.
- CPI INFOLINE* For current and historical Consumer Price Index data, call 1902 981 074 (call cost 77c per minute).
- DIAL-A-STATISTIC* For the latest figures for National Accounts, Balance of Payments, Labour Force, Average Weekly Earnings, Estimated Resident Population and the Consumer Price Index call 1900 986 400 (call cost 77c per minute).

INFORMATION SERVICE

Data already published that can be provided within five minutes will be free of charge. Our information consultants can also help you to access the full range of ABS information—ABS user pays services can be tailored to your needs, time frame and budget. Publications may be purchased. Specialists are on hand to help you with analytical or methodological advice.

- PHONE* 1300 135 070
- EMAIL* client.services@abs.gov.au
- FAX* 1300 135 211
- POST* Client Services, ABS, GPO Box 796, Sydney NSW 2001

WHY NOT SUBSCRIBE?

ABS subscription services provide regular, convenient and prompt deliveries of ABS publications and products as they are released. Email delivery of monthly and quarterly publications is available.

- PHONE* 1300 366 323
- EMAIL* subscriptions@abs.gov.au
- FAX* 03 9615 7848
- POST* Subscription Services, ABS, GPO Box 2796Y, Melbourne Vic 3001



2536800006037

ISSN 1328 2778

RRP \$19.50